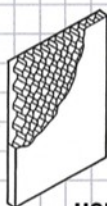


DOORS

- HOT-DIP GALVANNEAL STEEL - READY FOR FINISH PAINT
- OPTIONAL UL LABEL SERVICE • OPTIONAL VISION LITE / LOUVER
- FULL FLUSH SEAMLESS FACES • INVERTED TOP AND BOTTOM CHANNELS
- INTERNAL CONSTRUCTION AVAILABLE AS HONEYCOMB OR RIB REINFORCED



Honeycomb core is securely bonded to tension levelled steel faces.

20 or 18 ga.

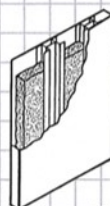
HONEYCOMB



Polystyrene core is securely bonded to tension levelled steel faces.

20 or 18 ga.

POLYSTYRENE



Steel rib stiffeners 6" on center to tension levelled steel faces. All voids filled with UL approved fiberglass insulation.

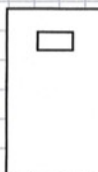
18 or 16 ga.

RIB REINFORCED

STANDARD DOOR ELEVATIONS



FLUSH



VISION LITE



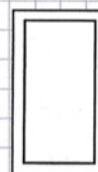
NARROW LITE



HALF GLASS



LOUVER



FULL GLASS

- Vision Lite Kits - Integral design with 1 removable glazing bead
- 1 1/2 Hour "B" Label - 100 square inches allowable glass
- 3/4 Hour "C" Label - 1296 square inches allowable glass
- Non Rated Louvers - Integral design (inverted "V" blades)
- Fire Rated Louvers - Fusible link type (supplied by Galaxy)

STANDARD STOCK SIZES			20 GAUGE				18 GAUGE		
WIDTH	2' - 0"	2' - 4"	2' - 6"	2' - 8"	2' - 10"	3' - 0"	3' - 0"	3' - 6"	4' - 0"
HEIGHT	6' - 8" OR 7' - 0"						HANDED ONLY		

STOCK DOORS ARE FLUSH - REVERSIBLE HAND
Sizes other than those shown and handed doors are available.

HARDWARE PREPARATION - STOCK DOORS

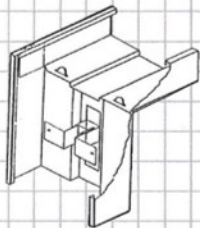
Single Swing

4-1/2" x 4-1/2" Template Hinges
161 Cylindrical Lock
Closer Reinforcement

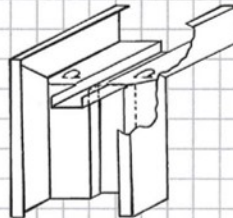
Inactive Leaf

4-1/2" x 4-1/2" Template Hinges
4-7/8" ASA Strike Plate
ASA Flushbolts
Closer Reinforcement

- HOT-DIP GALVANNEAL STEEL - READY FOR FINISH PAINT
- MITERED CORNERS • SPECIALS • MASONRY AND DRYWALL
- OPTIONAL LABEL • AVAILABLE KNOCKDOWN OR WELDED



KNOCKDOWN
Pressure fit anchors
adjust for a rigid
installation.
Optional fire label
(Factory Mutual)

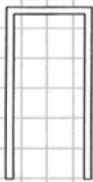


WELDED
Anchors for masonry
and drywall.
Optional sidelights.
Optional UL® fire label

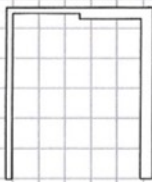
STANDARD FRAME ELEVATIONS

STOCK

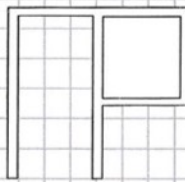
CUSTOM



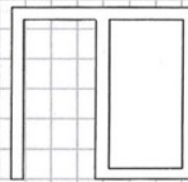
SINGLE SWING
PAIR SWING
TRIMMED OPENING
(KD OR WELDED)



DOUBLE EGRESS
(WELDED)



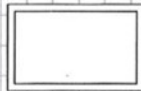
HALF SIDELIGHT
(WELDED)



FULL SIDELIGHT
(WELDED)



TRANSOM
(WELDED)



4 - SIDED BORROWED LIGHT
(KD OR WELDED)



SPECIAL BORROWED LIGHT
(WELDED)

JAMB - SIZES (Available from stock for immediate delivery)

SINGLE SWING										PAIR SWING				
WIDTH	2'-0"	2'-4"	2'-6"	2'-8"	2'-10"	3'-0"	3'-6"	3'-8"	4'-0"	4'-0"	5'-0"	6'-0"	7'-0"	
HEIGHT	6'-8", 7'-0" OR 8'-0"													
THROAT	3-1/2"		3-3/4"		4-5/8"		4-7/8"		5-5/8"		6-1/8"		7-1/4"	

STOCK FRAMES ARE 3-SIDED - SINGLE SWING / PAIR SWING
Non-standard sizes are available

HARDWARE PREPARATION - STOCK FRAMES

Single Swing

4-1/2" x 4-1/2" Template Hinges
4-7/8" ASA Strike Plate
Hole Punched for Silencers
Closer Reinforcement

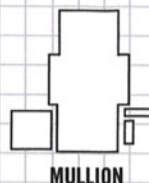
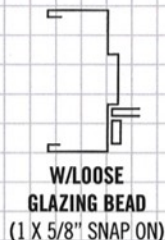
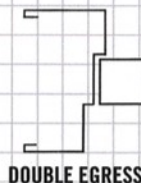
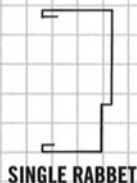
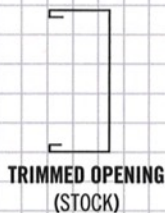
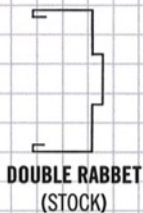
Pair Swing

4-1/2" x 4-1/2" Template Hinges
Closer Reinforcement

STANDARD

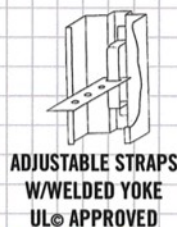
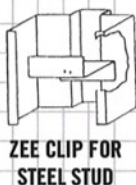
PROFILES

STANDARD JAMB PROFILES - 2' TRIM

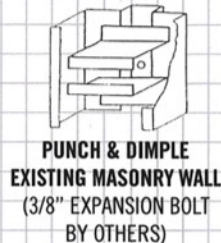


JAMB ANCHORS

DRYWALL

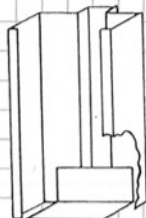


MASONRY

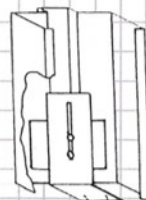


FLOOR ANCHORS

FIXED



ADJUSTABLE (Optional)



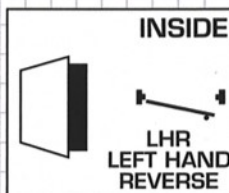
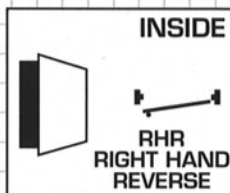
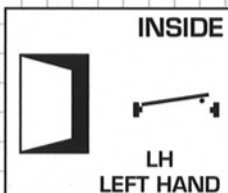
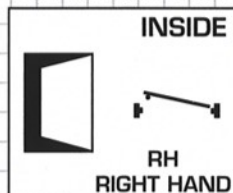
DOOR AND FRAME HAND CHART

How to determine hand of door and frame swing:
Hand all doors by standing outside on key side - facing door.

SINGLE DOORS

When door swings toward you and hinges are on right side of door:
Door is R.H.R / Frame is L.H.

When door swings to inside and hinges are on right side of door:
Door is R.H. / Frame is R.H.



FRAME INSTALLATION PROCEDURES

OUR KNOCKDOWN PRESSURE FIT FRAMES SLIP OVER A ROUGH DRYWALL OPENING AND, ONCE ADJUSTED, PROVIDE A RIGID INSTALLATION

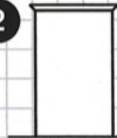
ROUGH OPENING - DOOR WIDTH + 2"
- DOOR HEIGHT + 1"

1



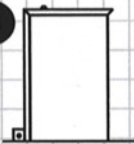
UNFOLD BASE CLIPS
ON BOTTOM OF JAMB.

2



INSTALL HEADER.

3



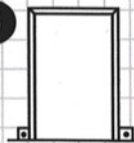
INSTALL (1) JAMB LEG, BE
CERTAIN THAT TABS AND SLOTS
INTERLOCK. MAKE SURE BASE
CLIPS WRAP OUTSIDE OF WALL.

4



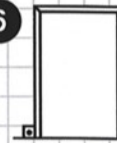
INSTALL OPPOSITE JAMB LEG,
LEVEL FRAME.

5



A. TIGHTEN PRESSURE CLIPS
COUNTERCLOCKWISE UNTIL SNUG.
B. SCREW ON BASE CLIP THROUGH
WALL INTO STUD
C. BEND OVER HEAD TABS.

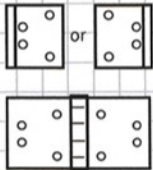
6



READY TO INSTALL GALAXY
HOLLOW METAL DOOR

DOOR INSTALLATION PROCEDURES

1



PLACE DUTCHMAN PLATE
(3 PROVIDED) UNDER HINGE
OPPOSITE KNUCKLE

2



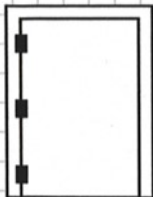
INSTALL BOTTOM HINGE ON
THE DOOR COMPLETELY TIGHT

3



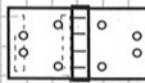
INSTALL MIDDLE & TOP HINGE
ON THE DOOR. DO NOT SECURE
TIGHTLY AT THIS POINT.

4



INSTALL THE DOOR TO FRAME
BOTTOM FIRST. THE LOOSE
HINGES ALLOW YOU TO HAVE
MORE FLEXIBILITY OF
ADJUSTMENT.

5



TO ADJUST THE DOOR TOWARDS
OR AWAY FROM THE STRIKE
(IF NEEDED). CARDBOARD SHIMS
(USUALLY FROM THE HINGE BOX)
CAN BE ADDED BEHIND THE HINGE.

FASTEN